

WeRa Monteurzimmer

HOUSE RULES

If you find anything missing in our accommodation, if there is a need for improvement or if we can help you in any way, please contact us. We will be glad to help you.

Please treat the equipment with care. In this way, the next guests will also feel comfortable with us. If there is any damage to the facility, please let us know. Inform us at the latest at the time of departure. In most cases, these matters can be resolved quickly and easily through the liability insurance. Please also point out these house rules to colleagues and employees.

GENERAL INFORMATION

- Damage and theft of items will be charged to the rental company.
- Smoking in rooms is strictly prohibited, in case of disregard will be charged 200€.
- Smoking place is designated and to be used accordingly.
- Entertainment and media must be operated at room volume, inside as well as outside.
- In case of extreme contamination with increased cleaning effort, additional charges will apply.
- Remove smoke detector: 55,00€
- Repair damage will be charged at cost

THE KITCHEN



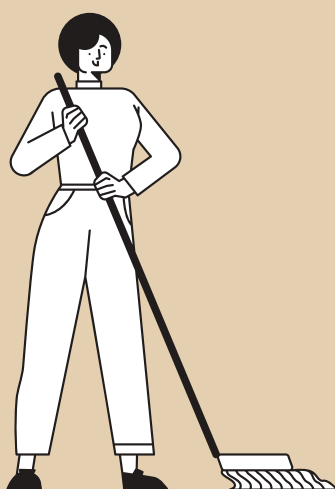
Please wash dishes, cutlery, pots and pans before leaving. This way the next guests will always find clean kitchen items. Please dispose of all food before leaving. Please leave the kitchen as you would like to find it the next time you visit.

HEATING/ VENTILATION

Please air the premises for 10 minutes every day. Turn off the heating with the window open. Please do not reprogram the heating system.



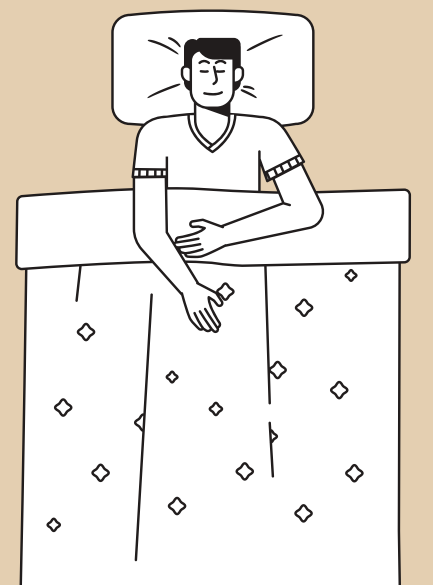
THE BATHROOM



The bathroom is cleaned regularly. Please open the windows for 15 minutes after showering. Turn off the heating during this time. Please do not dispose of food scraps in the toilet, shower or sink. Instead, use the trash receptacles provided.

RESTING TIMES

Please ensure that you and your colleagues are well rested and fit for work tomorrow, please adhere to our rest times. The night's rest is in the period from 22:00 to 7:00.



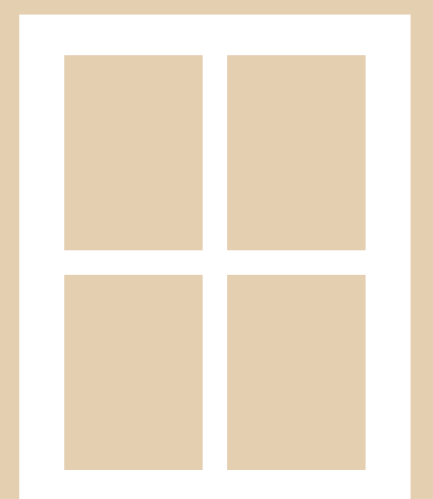
THE WASTE SEPARATION



Please separate trash into the bins provided. A picture is on the next page.

YOUR DUTY OF CARE

Please close all windows and doors before leaving the fitters' accommodation. In case of burglary or theft we do not assume any liability. Also check that all lights and the stove and oven are turned off.



WeRa Monteurzimmer

HOUSE RULES



VALUABLES

The lessor is not liable for valuables and wardrobe.

KEYS

As a tenant, you will receive a key from us. The loss of a key requires the replacement of the entire locking system. The costs for this are borne by the causer.



PARKING

Please use designated/public parking areas only and be aware of any parking hours.

FURTHER

Please do not reprogram devices such as the TV. Non-displayed persons are not allowed to stay in the accommodation. Do not carry furniture from the interior outside. Please remove dirty shoes before entering the accommodation.



Restmülltonne
residual waste bin
poubelle aux déchets résiduels
مزيلة النفايات غير الصالحة لإعادة التدوير



BioEnergieTonne
organic waste bin
poubelle aux déchets organiques
مزيلة النفايات العضوية



Grüne Tonne plus
green bin plus
poubelle verte
المزيلة الخضراء



Glasbox
glass box
poubelle au verre
السلة الزرقاء للمخلفات الزجاجية



Nein / no / non / ❌



Nein / no / non / ❌



Nein / no / non / ❌



Nein / no / non / ❌



Thank you for respecting our house rules. If you have any questions, please feel free to contact us at any time.

With kind regards

Your WeRa Monteurzimmer Team